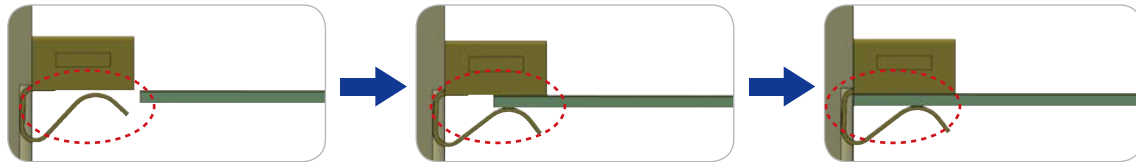
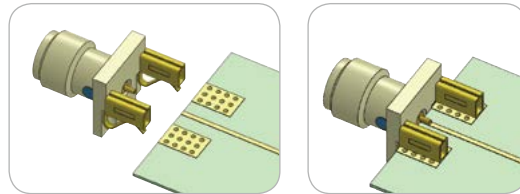


Gigalane **Quick End Launch (QEL™ SMA)** is designed for quick launch at the edge of PCB board up to 26.5 GHz. Specially designed leg immediately adjusts and firmly holds its attachment with the PCB. It is ideal solution for all active & speedy tests required in R&D. When compared with conventional end launch connector, it will effectually reduce soldering and assembly time when deployed in mass production.



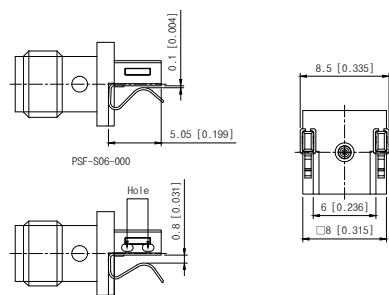
Easy & Speedy insertion

Uniquely designed legs maneuvers smoothly and evenly to fit the PCB thickness

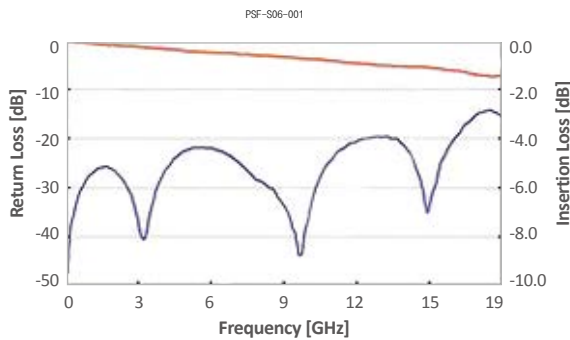
Built-in tension of legs enables even and firm attachment to the PCB

Unit : mm [Inch]

## Quick End Launch JACK



Part No.	Board Clearance
PSF-S06-000	0.25 ~ 1.2 mm
PSF-S06-001	1.25 ~ 2.0 mm



- <DUT>
- **Connector**
    - PSF-S06-000 : 2ea
  - **PCB**
    - FR4 Sub Thickness : 0.6 mm
    - 50 Ω Line Width : 1.2 mm
    - Line Length : 18 mm

\*As described in the table, 2 product specifications are available to accordingly cover all common PCB thicknesses.